

The Leading Edge

a newsletter for k-state distance students

Volume 1
Issue 2

July 2008

Disability Support Services



Spotlight on Student Services

Disability Support Services

Kansas State University's Disability Support Services (DSS) recognizes student needs and works to guarantee that every person enrolled in a K-State class, whether on-campus or at a distance, receives equal opportunity.

The DSS office is located in Holton Hall on the Manhattan campus but extends much farther than campus borders. Many services available to on-campus students with learning disabilities, physical disabilities, or attention deficit disorders also extend to those learning at a distance.

To gain assistance from DSS, a student should contact the office and provide disability documentation. Once this is complete, Adaptive Technology Specialist Jason Maseberg-Tomlinson will set up an appointment to speak one-on-one and customize a plan to accommodate the individual student's needs.

"We want to make sure that the student has a chance to ask any questions and is allowed the same relationship with our office as an on-campus student," Maseberg-Tomlinson said.

Services provided by DSS include extended time for exams, transcripts for class videos, audiobooks, and tutoring.

"While some of our distance students may use many of the same accommodations they would use in an on-campus environment, we do have to take the change of environments into account," Maseberg-Tomlinson said. "While some may find the lack of physical barriers a great relief, others may have trouble with certain types of technology."

Learn more about DSS: www.k-state.edu/dss, 785-532-6441, or dss@k-state.edu.

Location:

202 Holton Hall
K-State Main Campus

Hours:

8 a.m. – 5 p.m.
Monday – Friday

Website:

www.k-state.edu/dss

E-mail:

dss@k-state.edu

Phone:

785-532-6441

Fax:

785-532-6457



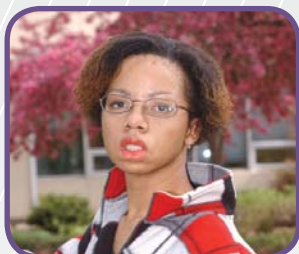
Notice of Nondiscrimination

Kansas State University is committed to nondiscrimination on the basis of race, color, ethnic or national origin, sex, sexual orientation, gender identity, religion, age, ancestry, disability, military status, veteran status, or other nonmerit reasons, in admissions, educational programs, or activities and employment, including employment of disabled veterans and veterans of the Vietnam Era, as required by applicable laws and regulations. Responsibility for coordination of compliance efforts and receipt of inquiries concerning Title VI of the Civil Rights Act of 1964, Title IX of the Education Amendments of 1972, Section 504 of the Rehabilitation Act of 1973, the Age Discrimination Act of 1975, and the Americans With Disabilities Act of 1990 has been delegated to the director of Affirmative Action, Kansas State University, 214 Anderson Hall, Manhattan, KS 66506-0124, 785-532-6220 or TTY: 785-532-4807.

Highlights and recognition

Meet a Student

Lanita McGee
Senior
Dietetics Program



Lanita McGee's visit to the University was more than just a trip to Manhattan. It was a milestone.

Lanita, a senior in the dietetics program, traveled to the K-State campus from Cincinnati, Ohio to accept one of this year's Extraordinary Student Awards from K-State.

The awards are given to up to six students of junior or senior standing each year who have overcome significant obstacles to achieve educational success.

Lanita was diagnosed with an inherited condition that impairs the transmission of auditory signals. She is the first distance student to receive the award since its inception in 2006.

"Meeting the faculty was the best part of the trip," Lanita said. "I was able to finally meet with my mentor and my advisor. Both have been instrumental in my progress through the dietetics program."

Lanita plans to explore career paths including gerontology, medical nutrition therapy, weight management for hearing impaired patients, or telehealth.

Meet the Partners

2 + 2 Agreements
Institutional Partnerships
in Kansas and the Nation

k-state2+2

K-State has established over forty **2+2 agreements** with institutions across Kansas and the nation. These agreements help students earn their first two years of study at their local institutions and transfer the majority or all of those credits to complete a K-State bachelor's degree through distance education.

Currently, 2+2 partnerships are in place with the following institutions:

Austin Community College (TX)
Barton County Community College (KS)
Barton at Fort Riley (KS)
Coffeyville Community College (KS)
Colby Community College (KS)
Dodge City Community College (KS)
Garden City Community College (KS)
Hutchinson Community College (KS)
Johnson County Community College (KS)
Manhattan Area Technical College (KS)
Metropolitan Community College (MO)
Northwest Kansas Technical College (KS)
Pratt Community College (KS)
Seward County Community College (KS)

Many more partnerships are in development. Details and degree maps for each agreement are available at www.dce.k-state.edu/affiliations/2+2programs.

Web Feature

Manhattan Tornado Update
Kansas State University Campus
June 2008



On the evening of Wednesday, June 11, 2008, an EF4 tornado passed directly through the city of Manhattan and the heart of Kansas State University. The tornado caused major damage to several campus buildings, parking lots, a fraternity house, and campus landscape, creating debris and hazardous conditions throughout campus. Damage costs to the University were estimated to exceed \$20 million.

The storm also damaged several businesses and homes in Manhattan, including the homes of four Division of Continuing Education staff members. Though property damage was high, there were only minor injuries reported in Manhattan. Division staff rallied around those in DCE and in the community who were in need of help and support.

Detailed **tornado updates** airing on K-State TV are available online. These updates include aerial views of tornado damage, recovery efforts, and more. To view the updates, visit www.k-state.edu/news.

Announcements and upcoming dates

Enroll in a Fall 2008 Class!

Search the listing of distance-accessible courses K-State offers each semester:
www.dce.k-state.edu/courses

Need Money for School?

Visit Adult Student Services for possible scholarship opportunities:
www.k-state.edu/adult/scholarships

Looking for Books?

See Varney's bookstore for all your back to school needs:
www.dce.k-state.edu/students/services/textbooks.shtml

Learn the Latest in Distance Technology!

Find out about current IT news within the K-State community:
www.k-state.edu/infotech/news/tuesday

****Please note****

Beginning with the Fall 2008 semester, a new process, called iSIS, will be implemented for enrollment, accessing your eBill, and obtaining your grades.

Begin now to become familiar with iSIS by signing in to isis.k-state.edu with your eID and password. You can view your Student Center, your class schedule, enrollment appointment, assigned advisor, and academic history.

Questions? See the Frequently Asked Questions section at:
www.dce.k-state.edu/courses.

* Summer semester ends: Aug. 15
* Fall 2008: enroll now!

* Fall semester begins: Aug. 25
* University closed: Labor Day, Sept. 1